

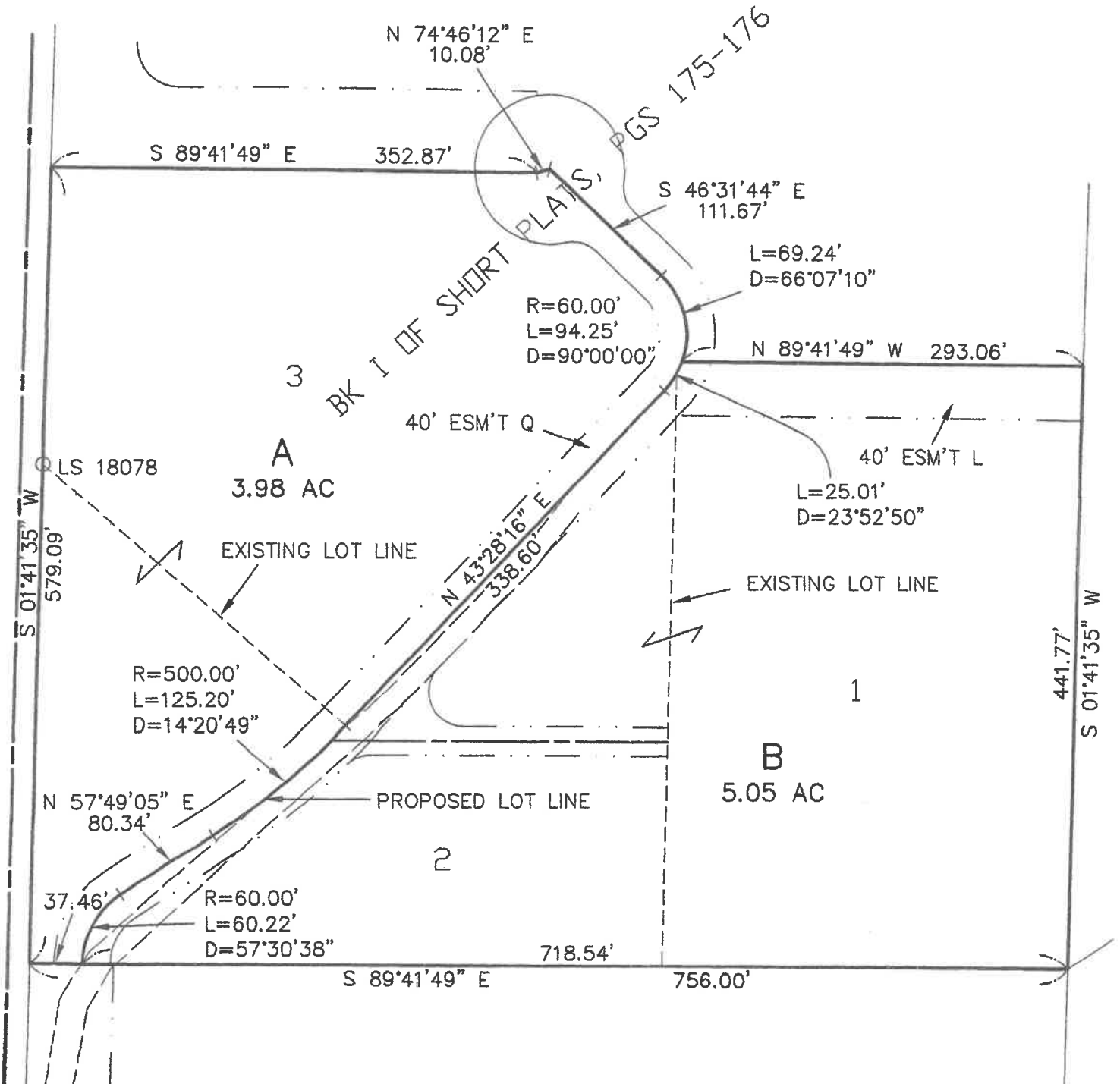


Proposed

# EAGLE VALLEY SIX LLC PROP.



SCALE: 1" = 100'





# Kittitas County COMPAS Map

# Site Plan



Date: 10/5/2017

1 inch = 188 feet  
Relative Scale 1:2,257

**Disclaimer:**  
Kittitas County makes every effort to produce and publish the most current and accurate information possible. No warranties, expressed or implied, are provided for the data, its use, or its interpretation. Kittitas County does not guarantee the accuracy of the material contained herein and is not responsible for any use, misuse or representations by others regarding this information or its derivatives.

No improvements on these parcels  
Narrative - Want to eliminate tax parcel 952793 and hold the E of the existing easement for the new boundary.

